

# Holographic LED Invisible Screen

Visible Impact · Invisible Presence

2026

# Primary Application Fields

## Urban Landmarks & Shopping Malls

Glass Curtains, Atriums, Glass Railings, Sightseeing Elevators.

## Premium Flagship Stores

Fashion & Jewelry, 3C Experience Centers, Banks

## Media & Transportation

Airports, High-speed Rail Stations, Transit Hubs

## Stage & Events

Bars, Nightclubs, Stage Design, Cultural Tourism

# Urban Landmarks & Shopping Malls — Glass Facades

Transform your glass facade into a high-value media asset without compromising natural light or architectural aesthetics.

Digital Glass  
Balustrades for Atriums

Functional Safety Meets Dynamic Art: Convert safety railings into interactive digital canvases that guide foot traffic and enhance the shopping atmosphere.

Coming  
Soon



# Urban Landmarks & Shopping Malls — Atriums & Windows

Create immersive 3D visual landscapes. Ideal for interactive retail displays that drive foot traffic and conversion.

## Sightseeing Elevator Media Facades

Immersive Motion Experience: Transform elevators into moving media landmarks without obstructing the passengers' view

## Holographic Central Atrium Displays

Aesthetic Dominance: Create a breathtaking 3D visual centerpiece that maintains the airy, open feel of the architectural space

# Brand Retail Chains — Dynamic Glass Showcases



Self-Media Mega Screens for Offline Retail.  
Zero-Obstruction Design: Natural Light & Brand Integrity Preserved.  
Immersive Creative Interaction: Drive Traffic & Boost Conversions.

## Tailored Solutions for Diverse Retail Segments

- Tech & Finance: Elevate 3C Experience Centers and Smart Banks with a futuristic, high-tech digital presence.
- F&B & Lifestyle: Drive foot traffic to Cafes and Bakeries with appetizing, interactive 3D content while keeping the store bright.
- Luxury & Fashion: Enhance Jewelry and Fashion Boutiques by blending high-definition advertising with architectural elegance—no bulky frames, just pure impact.

Digital Experience Centers & Smart Banking Hubs

Premium F&B Boutiques & Trendy Cafeterias

Fashion Flagships & Luxury Jewelry Boutiques

# Media & Transportation—Transport Hubs

High-impact digital displays for large indoor spaces, maintaining ambient lighting and structural design.

## Transportation & Public Infrastructure Solutions

- **Airports:** Elevate passenger engagement in **Terminals and Duty-Free zones** with 90% transparency that complements modern glass architecture.
- **Rail & Metro:** Turn high-traffic **Transit Hubs** into high-value advertising platforms without compromising safety or space.
- **Smart Transit:** Modernize **Bus Shelters** with "Invisible" LED film, delivering crystal-clear content while maintaining a 360-degree urban view.

International Airport Terminals & Duty-Free Zones

Mass Transit Hubs & Modern Railway Stations

Smart City Bus Shelters & Urban Transit Points

## Stage & Performance Backdrops

Immersive Naked-Eye 3D Visual Effects

Flexible Installation: Zero Obstruction for  
Lighting & Sightlines

Dynamic Light Transmission for Layered Visuals

## Entertainment & Experiential Solutions

- Nightlife: Redefine the clubbing experience with Transparent Visual Layers that blend seamlessly with moving lights.
- The Stage: Master the art of Holographic Scenography, allowing light and content to coexist in perfect harmony.
- Tourism: Power up Cultural Landmarks with immersive digital narratives that attract tourists and boost local night-time economies.

High-Energy Nightclubs &  
Entertainment Lounges

Stage Design &  
Performing Arts

Immersive Cultural Tourism  
& Urban Landmarks

## Product Series: Adhesive Series



### — Adhesive Series

#### Fixed installations for glass walls

Up to 90%-95% transparency. Using high-end heat-resistant materials and integrated lamp-driver technology.

Frame-less "Glue-on" design. Supports both front and back mounting directly on glass. Easy to maintain and space-saving

Fully flexible and cuttable to fit complex shapes or curved surfaces

9000:1 Contrast Ratio and up to 5000 nits brightness. Crystal clear even under direct sunlight

## Adhesive Series



**Model M3: High-Definition Clarity with Uniform Pixel Pitch**  
**Superior 90% Transparency for Seamless Integration**  
**Versatile "Glue-On" Mounting: Supports Both Front & Back Application**  
**Revolutionary Contrast: Redefining Transparency with Deep Blacks**

## All-in-One Series



### All-in-One Series

**Zero Site Constraints:** Designed for ultimate flexibility. Whether it's a flagship store or a pop-up event, our screens adapt to your space perfectly.

**Infinite Splicing:** Break free from standard sizes. Benefit from modular horizontal expansion to create ultra-wide, immersive displays tailored to your specific architectural needs.

**Fast Deployment:** Ready to use out of the box, reducing technical hurdles and on-site labor.

## Product Series: All-in-One Series

---

### Free-standing

Portable, modular, and easy to relocate.  
Ideal for showrooms.



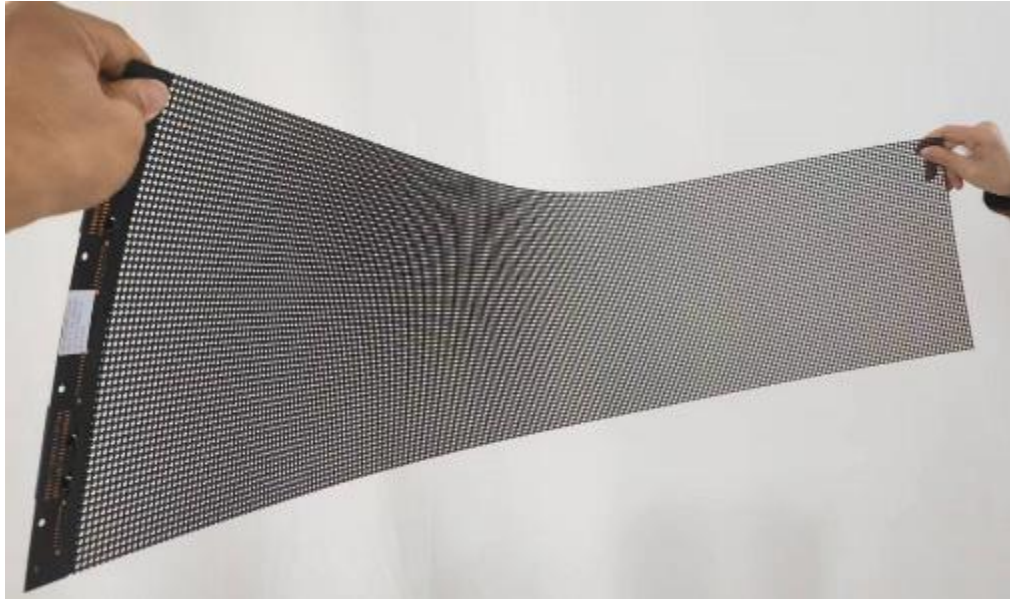
---

### Hanging

Lightweight design for stages and backdrop displays.  
Ideal for showrooms.



## Unmatched Versatility & Minimalist Engineering



### **Ultra-Flexible & Cuttable: Perfect for Any Geometry**

Tailor-made for curved glass, arched windows, and non-standard architectural structures.

### **Ultra-Light & Paper-Thin Minimalist "Glue-On" Installation: Front & Back Versatility**

Minimalist maintenance—individual strips can be replaced without dismantling the entire display.





## Core Product Advantages

- **Creative Freedom:** Flexible and cuttable modules that adapt to curved or irregular surfaces with ease.
  - **Thin & Light:** A featherweight design that adds zero burden to your glass structures.
  - **Seamless Mounting:** Unique adhesive technology for both front and back installation. It's the ultimate expression of minimalist installation and maintenance.
  - **Structural Integrity:** Transform any glass surface into a digital canvas without changing the building's original aesthetic.
-

## Unbeatable Visibility

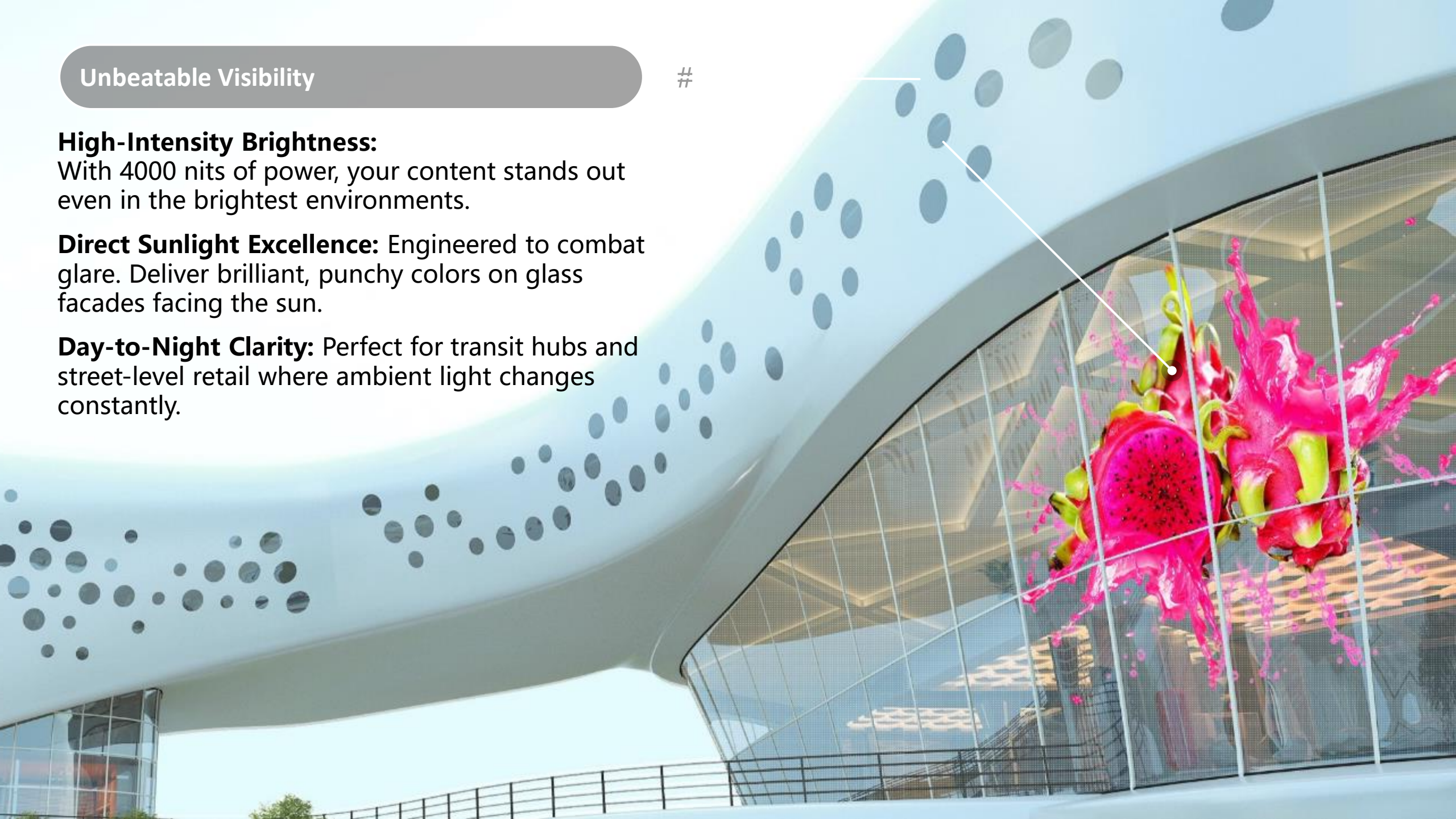
#

### **High-Intensity Brightness:**

With 4000 nits of power, your content stands out even in the brightest environments.

**Direct Sunlight Excellence:** Engineered to combat glare. Deliver brilliant, punchy colors on glass facades facing the sun.

**Day-to-Night Clarity:** Perfect for transit hubs and street-level retail where ambient light changes constantly.



## Technical Specifications — Adhesive Series

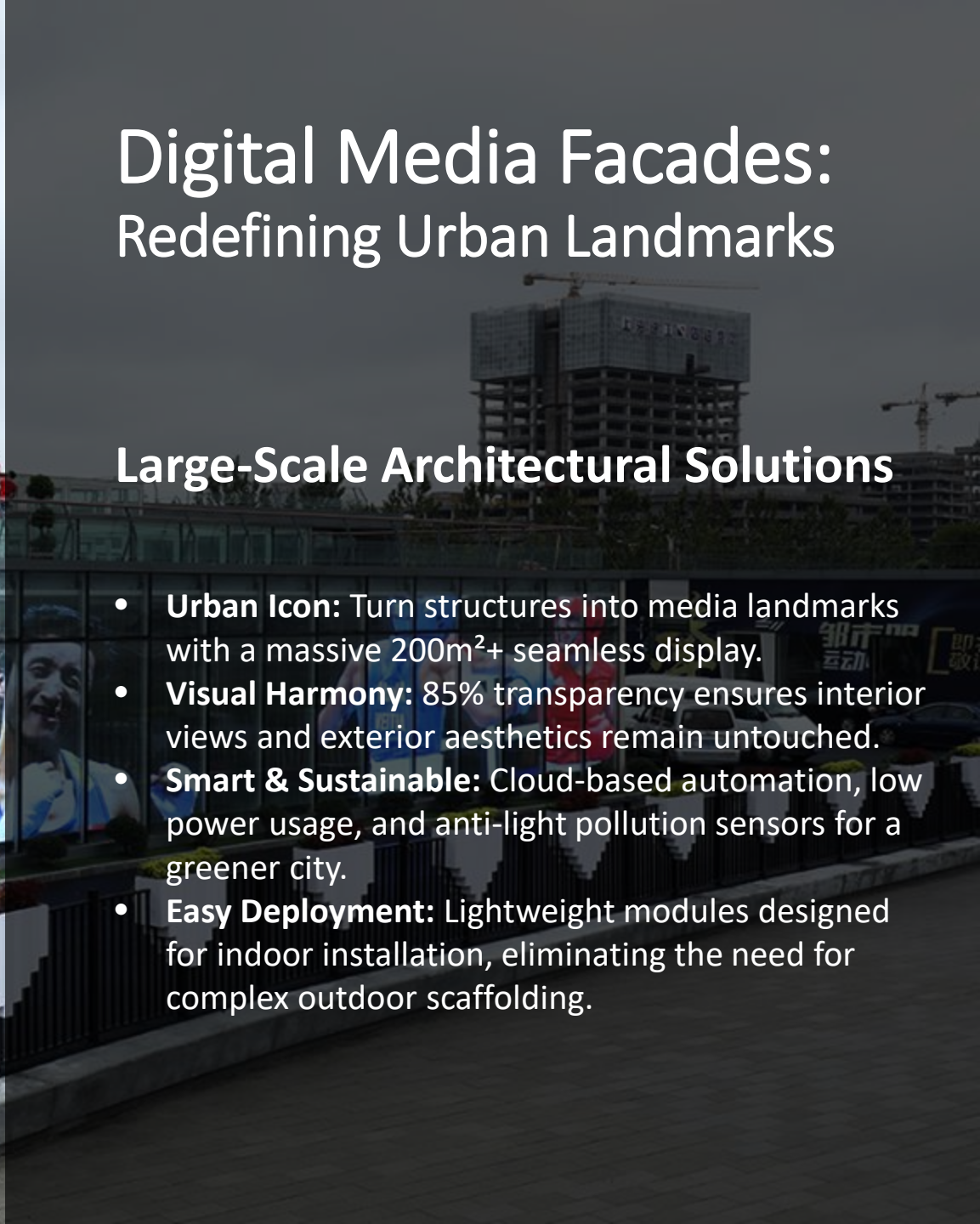
Parameter	Model M3 (P3.91)	Model M6 (P6.25)
Pixel Pitch (mm)	P3.91	P6.25
Transparency	92%	95%
Pixel Density ((dot/ m <sup>2</sup> )	65536	25600
Cabinet Dimensions(mm)	1000x250 \ 1200x250	1000x250\1500x250
Cabinet Resolution (dot)	256x64 \ 300X64	160x40\240x40
Weight (Kg/ m <sup>2</sup> )	6	6
Brightness (cd/ m <sup>2</sup> )	1500-3000	1500-3000
Packaging Type	Integrated LED Lamp-Driver Technology (2-in-1 Design)	
Scanning Method	Individual Pixel Addressability & Static Drive Method	
Lifespan	≥ 100,000 hrs	
Grayscale Scale	65536	
Maximum Power Consumption (W/ m <sup>2</sup> )	800	
Average Power Consumption(W/ m <sup>2</sup> )	200	
LED Control System	Synchronous & Asynchronous Control Modes	
Input Voltage	AC100~240V 50/60 Hz	
Module Operating Voltage	DC 4.2V ± 0.2V	



# Digital Media Facades: Redefining Urban Landmarks

## Large-Scale Architectural Solutions

- **Urban Icon:** Turn structures into media landmarks with a massive 200m<sup>2</sup>+ seamless display.
- **Visual Harmony:** 85% transparency ensures interior views and exterior aesthetics remain untouched.
- **Smart & Sustainable:** Cloud-based automation, low power usage, and anti-light pollution sensors for a greener city.
- **Easy Deployment:** Lightweight modules designed for indoor installation, eliminating the need for complex outdoor scaffolding.



# Commercial Atriums: Creating an Immersive Centerpiece

## Indoor Commercial Solutions

- **The Wow Factor:** Turn any atrium into a 3D visual landmark that drives foot traffic and social media buzz.
- **Interactive & Fluid:** Beyond just a screen—it's a massive, interactive canvas that connects with your audience.
- **Effortless Control:** Manage your entire display network from the cloud with automated "Set & Forget" software.
- **Interior Friendly:** Lightweight modular design for quick installation and simple, non-disruptive maintenance.
- **Intelligent Lighting:** Auto-dimming technology for eye-friendly displays that respect your interior ambiance.





# Street-Front Flagship Windows:

The Future of Retail Media



## Street-Level Media Solutions

- **Maximum Exposure:** 5000+ nits ensures your message is vibrant even under direct tropical sunlight.
- **Manager-Friendly:** Full control via smartphone—update your seasonal campaign in seconds.
- **Safety First:** Robust, modular design protects against pests and electrical issues, keeping your staff and customers safe.
- **Business as Usual:** Quick, clean installation that doesn't require store downtime.
- **Eco-Smart:** High efficiency, low power consumption, and auto-dimming for sustainable urban advertising.

# Jewelry & Luxury Retail: Illuminating Brand Elegance



Swarovski



FIYTA Watches



China Gold

## Strategic Application Scenarios:

- Brand Experience Centers & Flagship Showrooms
- High-End Window Displays
- Interactive Marketing & Customer Engagement

## Luxury Retail Solutions

- **The Art of Transparency:** 95% transparency ensures that your masterpieces remain the star of the show while the digital content adds a layer of magic.
- **Proven Excellence:** Trusted by global giants like **Swarovski** and **FIYTA** to redefine the luxury shopping experience.
- **Interactive Elegance:** Engage customers with floating 3D visuals that tell your brand's heritage story in high definition.
- **Minimalist Design:** Ultra-thin LED film that integrates seamlessly into premium glass counters and storefronts.

# System Architecture & Connectivity Topology



**THANKS**